

## DEDICATION OPPORTUNITIES

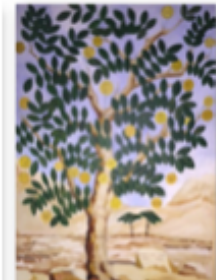
### Sanctuary Chair Plaque

Location: Sanctuary  
 Cost: \$250 per plaque  
 90 characters, 3 lines  
 Example: *In honor of our Ina Green  
 Beloved Mother and Wife  
 The Green Family*



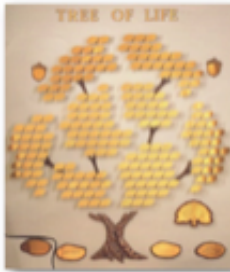
### Tree of Life Leaf Artist Designed Canvas

Location: Front Lobby  
 Cost: \$126 per leaf  
 Name and Year  
 Example: *Miriam Schwartz  
 May 1, 2015*



### Tree of Life Leaf Plaque

Location: Sanctuary Lobby  
 Cost: \$306 per leaf  
 100 characters, 3 lines  
 Example: *In honor of our daughter Miriam's Bat Mitzvah  
 May 1, 2015  
 The Schwartz Family*



### Eternal Flame Endowment Campaign Plaque

Location: Front Lobby  
 Cost: \$10,000 per plaque  
 8 Lines



## PERPETUAL MEMORIAL OPPORTUNITY

### Sanctuary Prerpetual Memorial Plaque

Location: Sanctuary  
 Cost: \$500 per plaque  
 3 lines  
 Example: *Hebrew Name  
 Full English Name  
 Passing Date & Hebrew Passing Date*  
***They will be lit in perpetuity on the anniversary of  
 their death***





## DEDICATION ORDER FORM

<b>NAME</b>	
<b>ADDRESS</b>	
<b>CITY, STATE, ZIP</b>	
<b>PHONE NUMBER</b>	
<b>EMAIL</b>	

<b>CHECK ONE:</b>	IN HONOR OF:		IN MEMORY OF:		DONATED BY:	
-------------------	--------------	--	---------------	--	-------------	--

<b>CHECK ONE:</b>	SANCTUARY CHAIR PLAQUE		TREE OF LIFE PLAQUE		TREE OF LIFE CANVAS	
	ETERNAL FLAME PLAQUE		PERPETUAL MEMORIAL PLAQUE			

### WORDING FOR DEDICATION. See character limits above. Please print clearly.

line 1	line 5 (Eternal Flame Endowment only)
line 2	line 6 (Eternal Flame Endowment only)
line 3	line 7 (Eternal Flame Endowment only)
line 4 (Eternal Flame Endowment only)	line 8 (Eternal Flame Endowment only)

### WORDING FOR PERPETUAL MEMORIAL PLAQUE ONLY. Please print clearly.

line 1 Hebrew Name
line 2 Full English Name
line 3 Passing Date

Form must be accompanied by a check **payable to FVJC-ES**. All funds (less the cost of the plaque), go directly to the FVJC-ES fundraising account. Send form and check to: **FVJC-ES, 55 Bushy Hill Road, Simsbury, CT 06070.**

Sign	Date	Amount Due
------	------	------------